

\$5.00

PERSPECTIVES

THE JOURNAL OF THE ONTARIO ASSOCIATION OF ARCHITECTS

VOLUME 3, NUMBER 2 SUMMER 1995



SACRED SPACES



Design Feature: Hospital Sanctuary

The Victoria Hospital's sanctuary is a tranquil retreat within the busy hospital. As well as functioning as a refuge for the spiritual support of patients, families, visitors and staff, the sanctuary serves as a gathering space for worship, memorial services, baptism and weddings.

The sanctuary was inserted into an unfinished shell on the second level of the 1980s structure. Natural elements essential to life—light, fire and water—are used in conjunction with stone and wood to create a blend of healing strength and comfort.

The existing massive concrete walls were used as key pieces to sculpt the otherwise free space into functional areas. The main concrete wall supports a granite slab and water fountain on one side, and on the other

supports a cantilevered plane of brushed steel. The steel form is a focal point in the gathering space and functions as a podium, altar, bench or surface on which to place personal or religious symbols.

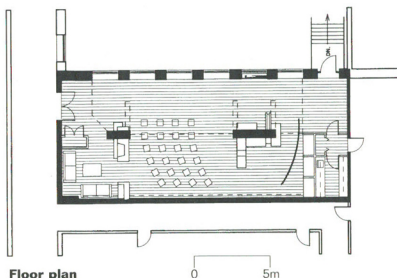
The existing window openings contain overlapping planes of stained glass set at various levels. The windows cast a spectrum of intense light which traces the movement of the sun across the concrete walls and wood floor. Beech wood adds richness to the floors, screens and paneled ceiling.

Client: Victoria Hospital Corporation

Architect team: Bradley Skinner,
Sandra Bukowski, Lucien Iribarne, Laura
Klinger

Size: 1,400 s.f.

Cost: \$92 s.f.

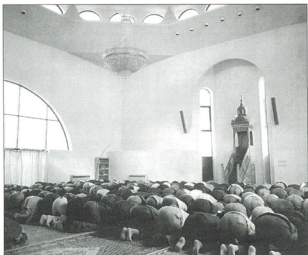


Interfaith Sanctuary, Victoria Hospital, London, Ontario;





Exterior of the Ottawa Mosque by Asad Architect Inc.



"Be not, then, among the doubters, for every community faces a direction of its own, of which Allah is the focal point. Vie, therefore, with one another in doing good works."
Quran, Surath-Al-Baqra, Verse 148

Ghazi Asad of Asad Architect Inc. has been designing mosques in Canada for over twenty years. He has tried to achieve the rich effect of Islamic architecture with the modest means available in Canada. In the design for the Ottawa Mosque Asad confronted the extreme cold of the Canadian climate, which he paralleled to the extreme heat of the desert, to develop a new type of Mosque that integrates a

special place of worship for women and children as well. Recently, Ghazi and his associate Ahmed S. Mubashiruddin have been working on complexes in Hamilton and other cities with growing Muslim communities.

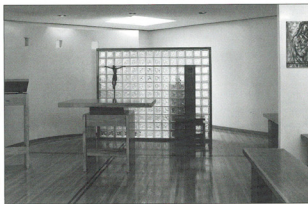
"The mosque in Ottawa has been in operation since the early seventies and has become a great source of religious teachings for the Muslim community in and around Ottawa. As it is so uniquely designed, it has also enhanced the image of Ottawa as a city and has become a great tourist attraction."
Saeed Bokhari,
Secretary, Ottawa Muslim Association

Sanctuaries

"Remove the sandals from your feet, for the place where you stand is holy ground."
Exodus 3:5

This chapel designed by **Renzo Pilon** architect, constructed in 1990, serves as a day chapel for 20-30 people.

♦ ♦ ♦ ♦



Epiphany of Our Lord Chapel, Scarborough, Ontario
by Renzo A. Pilon Architect

"Whose dwelling is the light of setting suns, and the round ocean and the living air, and the blue sky, and in the mind of man: A motion and a spirit that impels all thinking things, all objects of all thoughts, and rolls through all things..."
William Wordsworth

"The new Sanctuary has become a place of peace and comfort to the families of our patients. Recently, one family chose to hold their son's memorial service here. This quiet and reverent room was the place that the family associated with God's healing presence in their son's life."

Inge Osborn, Chaplain

This non denominational chapel set in the famous Victoria Hospital which inspired such noted Canadian artists as Jack Chambers and Greg Curnoe to creative heights has equally inspired **Brad Skinner of Paul M. Skinner Architect Inc.** to create a modern landscape which evocatively suggests the sacred.

♦ ♦ ♦ ♦



Victoria Hospital Sanctuary
London, Ontario
by Paul M. Skinner Architect Inc.

♦ ♦ ♦ ♦