

# MODERN EDGE

THIS WEST LONDON  
HOME WAS DESIGNED  
AROUND A LOVE  
OF COOKING

*By Judy Liebner*

**Left:** The refrigerator is surrounded by off-white laminate cabinets with a tall bank of glass and stainless steel shelving on the right and a wine refrigerator on the left.

**Below:** Rich walnut woodwork and taupe limestone floors create a contrast to the kitchen's monochromatic colour scheme.

**Below Large:** The kitchen's island is an off-white quartz counter with a walnut base. It accommodates six people comfortably for casual meals.



Colin and Lesley Hopper are so serious about cooking that they had their floorplan designed around the most important room in their home – the kitchen.

The couple, who live in west London, entertain frequently and host everything from casual lunches to dinner parties for 20.

"It's a perfect, perfect kitchen," Lesley says. "The kitchen, to us, is the most important room in our home."





Brad Skinner, a London architect, planned the home around the kitchen to reflect Lesley's love of cooking. Once he determined the square footage of the workspace, Verdi Design designed the kitchen, while Artisan Interiors crafted the cabinetry. Scott Brown, owner of Brownstone Design and Build, built the 3,600-square-foot home, which overlooks the Thames River.

Brown's goal was to build a home that was classic, yet up to date. Colin and Lesley chose a variety of natural materials, including limestone floors, quartz counters and walnut woodwork, to infuse Skinner's modern design with texture and warmth.

The Hoppers moved into their stone and stucco home last December and have hosted several large parties. "We don't have any children and we entertain a lot—no matter what kind of party you put on, everybody ends up in the kitchen," Lesley says.

**Continued on page 30**



**Above Large:** The great room and outdoor living areas are visible from the kitchen.

**Top Right:** Floor-to-ceiling windows in the great room provide an optimal view of the wooded area on the banks of the river.

**Right:** Built-in walnut shelves with a clean, streamlined design display decorative accents.

# Colony Cabinets

2007 Inc.

custom woodworking & design

Nature creates beautiful wood products and you will find this beauty and richness in our Custom Cabinetry.



361 High St. Strathroy 519-246-1914 [www.colonycabinets.ca](http://www.colonycabinets.ca)

## YOUR QUARTZ SUPERSTORE

NOW OFFERING HANSTONE, CAESARSTONE, TECHNISTONE AND ZODIAQ  
- THE BEST IN QUARTZ COUNTERTOP SURFACES -



== THE ==  
**TOP SHOP** INC.



502 FIRST STREET  
LONDON, ONTARIO  
TEL: 519.455.9400  
FAX: 519.455.2050  
[WWW.THE-TOPSHOP.COM](http://WWW.THE-TOPSHOP.COM)

*Your Dream...Our Solution*



**Above:** The Hoppers chose an induction oven and cooktop which blend in well with the design of the kitchen. Stainless steel and glass cabinets above the range display Lesley's collection of everyday dishes.

Continued from page 29

Given the couple's entertaining style, a large island was a priority. The Hoppers paired an off-white quartz counter, eight feet long by four feet wide, with a walnut base. The island seats six people comfortably and is ideal for a casual lunch or dinner, Colin says. The aerodynamic bar stools fit neatly under the counter.

A narrow stainless steel trough in the centre of the counter can be filled with ice and topped with dishes of chilled seafood during parties. The couple also use the trough, instead of ice buckets, for chilling wine.

While the island forms a focal point for guests, the cooking area is positioned well away from it on the kitchen's perimeter, which makes it easier for Lesley to complete her dinner preparations. Wide aisles provide terrific traffic flow between the island, and the cabinetry and the appliances.

"There could be 15 people milling around pretty easily and we can still do whatever cooking we have to do," Colin says.

Rich walnut woodwork and taupe limestone floors create a contrast to the kitchen's monochromatic colour scheme. Bands of walnut trim frame functional items, such as the stainless steel sub zero refrigerator and off-white laminate cabinetry, distinguishing them from the linen-coloured walls.

**Harms**  
kitchens

dream | design | create

[www.harmscarpentry.com](http://www.harmscarpentry.com) | 519.765.2640

Key elements in the kitchen are positioned within easy reach of one another, from the warming drawer in the island directly across from the range to a pull-out drawer for baking pans that is concealed by a walnut kickplate.

The couple chose an induction oven and cooktop, which allow for quicker adjustments to heat than gas appliances. "It's great to clean, fantastic to cook with and it suited the style of the kitchen, too," Brown says. "It's a very architectural home."

Other important features include a glass display cabinet that showcases cocktail glasses above the wine fridge. The bottom part of the cabinet door lifts up to reveal an additional shelf for liquor storage. Similar cabinets above the range display Lesley's collection of everyday dishes.

A laminate panel, outfitted with hardware to resemble three drawers, cleverly conceals the couple's garbage and recycling bins. Panels also disguise two dishwashers — a must for large parties.

Jonathan Say, owner of Artisan Interiors, says his challenge in building the cabinetry lay in balancing form and function. "Colin and Lesley wanted it to come off looking very contemporary and sleek, but at the same time they didn't want to have things in the kitchen that didn't make sense. They wanted sophisticated and simple lines."

Continued on page 33

**Below:** A narrow stainless steel trough in the centre of the island can be filled with ice and topped with dishes of chilled seafood during parties.



## GRANITE • NATURAL STONES • MARBLE



*More than 120 colours  
on display and  
more than 60 colours  
in stock!*



### Our Newly Designed

#### Showroom Features:

- Granite Slabs & Tiles
- Marble Slabs & Tiles
- Limestone, Slate
- Soapstone
- Tumbled Marble
- Quartz Solid Surfaces

### We Custom Fabricate:

- Kitchen Counters & Islands
- Vanity & Bar Tops
- Fireplace Surrounds
- Tub Decks & Splashes
- Shower Sills & Seats
- Stone Tile Floors & Walls
- Furniture & Accent Pieces

580 HORTON STREET, LONDON • 438-5159



NEW  
from  
**Coni-marble**  
Manufacturing Inc.

Phone 453-0100

In addition to AVIAN® Solid Surfacing, Coni-marble now offers CAMBRIA® Quality Quartz surfaces. The natural beauty of this non-porous material will satisfy the most discriminating buyer.

Find out the latest in kitchen counter-top material by contacting Coni-marble or visit our showroom to view a great colour selection of this exciting NEW material.

Our showroom location is 31 Artisans Crescent, London, just off Veterans Memorial Parkway





**Above:** A vaulted ceiling spans the kitchen and great room.

#### Continued from page 31

Say created a walnut partition that extends slightly above the double undermount stainless steel sinks, providing visual separation between the workspace and the adjoining sunken great room. The partition was a key element for the Hoppers who didn't want pots and pans to be visible from either the great room or the dining room.

Outdoor living spaces also form part of the kitchen's design. Floor-to-ceiling windows in the great room provide an optimal view of a wooded area on the banks of the river. Off the kitchen, sliding patio doors open out to a covered patio equipped with an outdoor fireplace. Steps lead down to a large patio with a dining area that overlooks the woods.

The Hoppers have kept their lawn fairly natural to entice the wildlife. "We look forward to seeing the deer," Colin observes. "We try to make sure they feel comfortable so they'll come and visit us on a more regular basis." ■

**Below:** A walnut partition provides visual separation between the kitchen's workspace and the adjoining great room.



## DESIGNS of DISTINCTION Kitchen & Bath Cabinetry



At Designs of Distinction, we carry many cabinetry lines to suit any style or budget.

We carry several countertop options and an exciting sampling of backsplash tiles and flooring tiles as well.

To compliment your beautiful cabinetry, choose from a vast selection of hardware, ceramic and plumbing products.

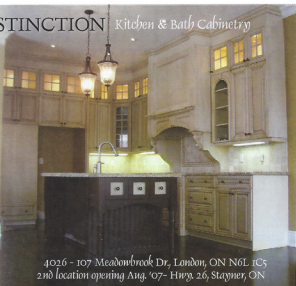
*it's not just a kitchen,  
it's distinctive*

[www.dofd.ca](http://www.dofd.ca)

ph. (519) 652-8627

fax (519) 652-9610

4026 - 107 Meadowbrook Dr., London, ON N6L 1C5  
2nd location opening Aug. '07- Hwy. 26, Stayner, ON




**Elgin Pure Water Inc.**  
Water Treatment Specialists since 1981

### Drinking for two

A life of good conscious choices versus unconscious reactions; is a life destined to be fulfilled.

Kinetico, Canada's Water Experts put you in complete control with worry free water solutions that let you get on with all the other choices you have to make.

**Commercial • Industrial • Residential**  
**519.633.1861**

**Kinetico**  
home water systems

## Are You Building or Renovating?

**Then you owe it to yourself to visit Multi Media Systems.**

We are London's premier source for custom home entertainment and smart home systems. Come experience the latest technology in Sound-Vision-Lighting-Security and Automation from pre-wire to system integration.

*Nobody Does it Better!*

Best in class products available for audition or purchase  
AMX  
PIONEER ELITE  
LG • KEF • NAD  
RUSSOUND  
and many more

*Make an appointment for your personal tour of our showroom*

**multi MEDIA**  
S Y S T E M S

69-B Wellington Street, London  
Tel: (519) 679-7370  
[www.1smarthouse.ca](http://www.1smarthouse.ca)